

A white Oliver truck is shown from a side-rear perspective, driving on a dirt road. The truck's trailer is heavily loaded with large, stacked logs, secured with black straps. The background consists of a rugged, brown, rocky hillside. The lighting suggests a bright, sunny day.

Oliver[®]

Oliver keeps trucks moving through any tough conditions

Reliable, Durable and Affordable

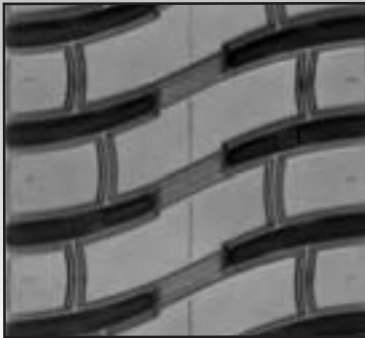


Oliver[®]
Established in 1912.

Bring us your toughest job sites and Oliver has a product to keep you working.

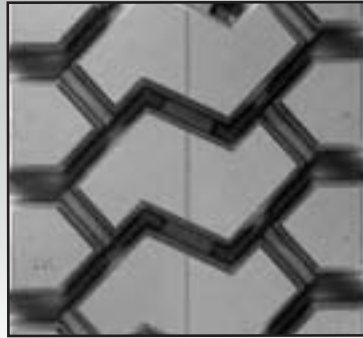
MCL-DU

- Excellent drive tread for off road applications in severe conditions.
- Massive interlocking lugs and deep undertread resist penetration of foreign materials while providing superb traction.
- Produced in Oliver's proprietary Xxtra-Tuff compound that offers superb cut, chip and chunk resistance that is needed in severe service applications.
- Utilizes Oliver's exclusive tread feature called **VDIplus**. This tread feature acts as a **Visual Depth Indicator plus** it resists the retention of road debris and helps in the enforcement of pull points.
- Recommended for 70% or more off-road use.



Tioga II

- Recommended for low speed applications requiring excellent traction and self-cleaning.
- Massive lugs resist penetration and provide excellent traction.
- Produced in Oliver's proprietary tread compound Tri-Cor. Provides excellent chip, cut and chunk resistance while supplying exceptional mileage.
- **VDIplus** - **Visual Depth Indicator plus** reduces stone and foreign material retention and aids in the enforcement of pull points.
- Recommended for 30% or less off-road use.



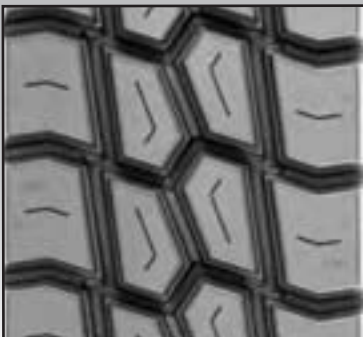
MCL

- Excellent drive tread for on/off road applications such as mining, construction and logging.
- Massive interlocking lugs resist penetration of foreign materials while providing superb traction.
- Produced in Oliver's proprietary Tri-Cor compound to promote long wear while offering the cut, chip and chunk resistance needed in specialty service applications.
- Utilizes Oliver's exclusive tread feature called **VDIplus**. This tread feature acts as a **Visual Depth Indicator plus** it resists the retention of road debris and helps in the enforcement of pull points.
- Recommended for 30% or less off-road use.



XS-D

- Recommended for 70% or more off-road severe service.
- Excellent traction in severe service applications.
- **VDIplus** reduces stone retention.
- Self-cleaning design.
- Accepts chains.



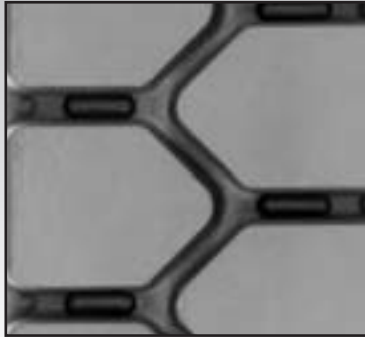
VDIplus

Oliver exclusive feature that has two extremely useful benefits that every transportation and logistics company can utilize. **VDIplus** acts as a Visual Depth indicator, plus it is a stone ejector and reduces foreign material retention. This feature results in benefits no other retread product in the industry can deliver.

With easy visual tread depth gauging, you can enhance your fleet operations budget planning process, while better identifying and enforcing your pull point requirements. The reduced lodging of foreign material abates the usual stone drilling conditions and casing penetration issues that typically occur in the Severe Service Application.

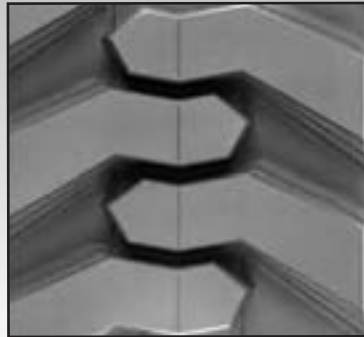
Specialty Lug

- Designed specifically for forklifts.
- Extra-deep tread for long wear.
- High traction design.



RoughNeck

- The 26/32 high void tread depth provides superior traction in the most adverse conditions.
- The deep undertread supplies solid casing protection.
- Step-down ledges on both sides of the lug deliver forward and reverse digging traction.
- Oliver exclusive feature called **VDI_{plus}** is strategically utilized.



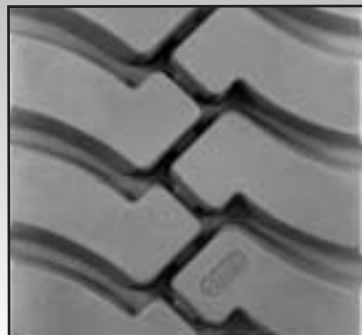
Products for
non-highway
applications.



Traditional
designs still
providing great
service in tough
applications.

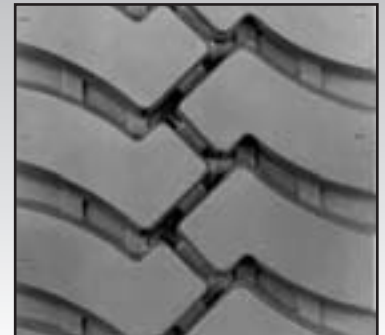
DLL

- Particularly recommended for logging, waste, concrete, construction, and switcher applications that run both on and off road, short use haul only.
- Massive lugs provide excellent traction.
- Extra deep tread promotes long wear.



Lug Logger

- Particularly recommended for logging, waste, concrete, construction and switcher applications that run both on and off road for slow speed, short haul only.
- Massive lugs provide excellent traction.
- Deep tread promotes long wear.



OLIVER® RETREADS QUICK REFERENCE TREAD GUIDE

Product Availability (Tread Depth in Shaded Boxes)

Tread Size - mm	145	160	195	205	210	220	230	235	240	250	275	300	320
Tread Size - standard	2.5	4	7	8	8.5N	9	9.5	9.5	10.5	12	14.5	15.5	16.5
DLL				30		30		30		30			
Lug Logger			22	22		22							
MCL					28	28							
MCL-DU						30			36	36		36	40
RoughNeck						26			26		26		
Specialty Lug	20	24	28										
Tioga II					28	28			28				
XS-D					30	30	30		30				

Tread Design	Size		Base Width		Tread Width		Tread Depth		MSPN
	mm	std.	mm	in.	mm	in.	mm	in.	
DLL	205	8	203	8.00	191	7.50	24	30/32	00233
	220	9	219	8.63	206	8.13	24	30/32	00235
	235	10	235	9.25	222	8.75	25	32/32	00237
	250	12	254	10.00	241	9.50	25	32/32	00239
Lug Logger	195	7	194	7.63	184	7.25	17	22/32	55722
	205	8	203	8.00	191	7.50	17	22/32	00228
	220	9	219	8.63	206	8.13	17	22/32	64910
MCL	210	8.5N	210	8.27	203	8.00	22	28/32	09695
	220	9	220	8.66	213	8.39	22	28/32	09717
MCL-DU	220	9	220	8.66	213	8.37	24	30/32	09977
	240	10.5	240	9.45	231	9.11	29	36/32	09727
	250	12	250	9.84	241	9.50	29	36/32	09732
	300	15.5	300	11.81	291	11.47	29	36/32	09763
	320	16.5	320	12.60	310	12.22	32	40/32	09921
RoughNeck	220	9	220	8.66	204	8.04	21	26/32	18771
	240	10.5	240	9.45	224	8.83	21	26/32	18774
	275	14.5	275	10.83	259	10.20	21	26/32	18792
Specialty Lug	145	2.5	146	5.75	140	5.50	16	20/32	19787
	160	4	162	6.38	156	6.13	19	24/32	19835
	195	7	194	7.63	184	7.25	22	28/32	19926
Tioga II	210	8.5N	210	8.27	196	7.71	22	28/32	20157
	220	9	220	8.66	206	8.11	22	28/32	20167
	240	10.5	240	9.45	226	8.90	22	28/32	20087
XS-D	210	8.5N	210	8.27	197	7.75	24	30/32	18377
	220	9	220	8.66	207	8.15	24	30/32	18101
	230	9.5	230	9.06	217	8.54	24	30/32	18346
	240	10.5	240	9.45	228	8.96	24	30/32	18422

www.oliverrubber.com

Oliver Rubber Company, One Parkway South, Greenville, SC 29602-9001, 1-866-464-2580

Prices subject to change without notice.

Copyright © 2011 Oliver Rubber Company All rights reserved. An Equal Opportunity Employer.

OLV43902 (02/11)

